

# Linn-Mar Community School District

2020-21

Return to Learn Plan

*This document is subject to change.*

*Last updated: 8/18/20*



Inspire Learning. **Unlock Potential. Empower Achievement.**

# Outline

- Updates to the Return to Learn Plan .....3
- Hybrid Option B: District Decision .....4-6
- Hybrid Option A: Family Choice .....7
- Summary: What are my options? .....8

**Safety**

- Face Coverings.....10
- Temperature Screenings.....11
- Reporting COVID-19 Symptoms/Cases.....12
- Classroom Structure/Layout.....13
- Meal Times.....14
- Hallways/Passing Times.....15
- Recess.....16
- Large Group Gatherings and Assemblies.....17
- Cleaning of Facilities.....18
- Signage.....19

**General**

- Attendance/Technology.....21
- Transportation.....22
- Arrival/Drop-off Procedures.....23
- Volunteers/Visitors.....24
- Exclusive Online Learning.....25
- FAQ/Contact info.....26

**Registration**

- 2020-21 Registration for ALL students.....28



# Updates to the Return to Learn Plan

Our Return to Learn Plan continues to evolve, but our focus remains the same on **safety, flexibility and family choice**. We appreciate everyone's patience and understanding as we work through this unique and challenging time.

**Due to the derecho storm damage, all our school buildings were damaged with mainly roof and subsequent water damage. Here is what was decided at the August 17<sup>th</sup> Board Meeting:**

- **Staff will now start on Monday, August 31<sup>st</sup>**
- **K-9<sup>th</sup> grade students will start on Monday, September 14<sup>th</sup>**
- **10<sup>th</sup>-12<sup>th</sup> grade students will start on Wednesday, September 16<sup>th</sup>**
- **K-6<sup>th</sup> grade students will participate in the Hybrid Model for first two weeks of school (Sept 14<sup>th</sup> - 25<sup>th</sup>)**
- **7<sup>th</sup>-8<sup>th</sup> grade students will participate in the Hybrid Model through the first quarter, along with 9<sup>th</sup>-12<sup>th</sup> grades**
- **Families can apply for the Family Choice Model through Friday, August 21<sup>st</sup>**
- **eRegistration remains open due to surrounding power outages and internet issues**
- **Middle school (7<sup>th</sup>-8<sup>th</sup> grades) extra-curricular activities are cancelled for the fall**
- **Updates to the school calendar will be approved at the August 24<sup>th</sup> board meeting.**



# Hybrid Option B: District Decision

**All Linn-Mar schools will now start the school year in the Hybrid Option B: District Choice on September 14th. As of today, K-6 grades (including ECBP) will return fully on-site on September 28<sup>th</sup>.**

**Middle School and High School students will remain on this plan for the remainder of the first quarter.**

Students in K-12<sup>th</sup> grades will attend school rotating 50% on-site and 50% online to help reduce the number of students on-site at one time.

Students will be split into A group or B group alphabetically by their last name to ensure families are on the same schedule across the district. Students with a last name that begins with the letters A-K will be assigned to the “A” group. Students with a last name that begins with the letters L-Z will be assigned to the “B” group. A sample schedule is on the next page.

*\*Please note: Families can choose either Hybrid Option A or B.  
Preschool teachers will contact families to determine days of attendance.*





# Hybrid Option B: District Decision

Monday	Tuesday	Wednesday	Thursday	Friday
<b>Sept. 14</b>	<b>Sept. 15</b>	<b>Sept. 16</b>	<b>Sept. 17</b>	<b>Sept. 18</b>
K-9: A	K-9: B	K-12: A	K-12: B	K-12 A
<b>Sept. 21</b>	<b>Sept. 22</b>	<b>Sept. 23</b>	<b>Sept. 24</b>	<b>Sept. 25</b>
K-12: B	K-12: A	K-12: B	K-12: A	K-12: B
<b>Sept. 28</b>	<b>Sept. 29</b>	<b>Sept. 30</b>	<b>Oct. 1</b>	<b>Oct. 2</b>
K-6: all students on-site	K-6: all students on-site	K-6: all students on-site	K-6: all students on-site	K-6: all students on-site
7-12: A	7-12: B	7-12: A	7-12: B	7-12: A

**A Group**  
Last  
names  
that start  
with A-K

**B Group**  
Last  
names  
that start  
with L-Z

*\*Please note: Families can choose either Hybrid Option A or B.  
Preschool teachers will contact families to determine days of attendance.*



# Hybrid Option B: District Decision

With the addition of the new two Intermediate schools (Hazel Point and Boulder Peak), the seven Elementary and two Middle School buildings have all gained much needed extra space. This will allow for increased social distancing at these schools. The Intermediate schools were built with room to grow so they also have extra space.

Due to the size of the High School (2,260 students) social distancing is a challenge, especially during lunch, passing times in the hallways and in some of the larger classes.

Middle School courses are structured similar to the High School and we have many shared teachers and courses between the middle school and high school, so we needed them to be on the same schedule. This also helps reduce the number of students on-site to help with social distancing.

*\*Please note: Families can choose either Hybrid Option A or B.  
Preschool teachers will contact families to determine days of attendance.*



# Hybrid Option A: Family Choice Model

Under Hybrid Option A plan, Linn-Mar is offering a 100% M-F online learning for K-12 grade students as an alternative. This online option is technically classified under a Hybrid learning plan because classes are still being offered on-site at the schools.

If families are not comfortable returning to on-site school for covid related reasons, they can apply to participate in Hybrid Option A.

Linn-Mar will provide eligible students with online learning taught by a certified Linn-Mar teacher. **Families must apply by August 21<sup>st</sup>, 2020 in order to secure placement to assign staff accordingly.**

**To apply for Hybrid Option A please click [here](#).**

*\*Please note: Families can choose either Hybrid Option A or B.  
Preschool teachers will contact families to determine days of attendance.*



# Summary: What are my options?

**All 12 school buildings will start the school year in a Hybrid Model. Families can choose either Hybrid Option A or Option B:**

## Hybrid Option A: Family Choice Model

- Learning will be 100% online M-F.
- **Families need to apply by Aug. 21<sup>st</sup>**
- Students can apply for Option A at a later time, but placement won't be immediate.
- By signing up for Hybrid Option A you are committing for remainder of the quarter.
- **[Click here](#)** to apply for Hybrid Option A.

## Hybrid Option B: District Decision

- Learning will be 50% on-site, 50% online and will rotate MWF, TTh by last name.
- No application required for Option B.
- Middle School and High School will remain on this plan for remainder for first quarter.
- As of now, K-6 grade students will return to school on-site M-F on September 28<sup>th</sup>.

*\*Visit our [FAQ](#) for more information.*





# SAFETY



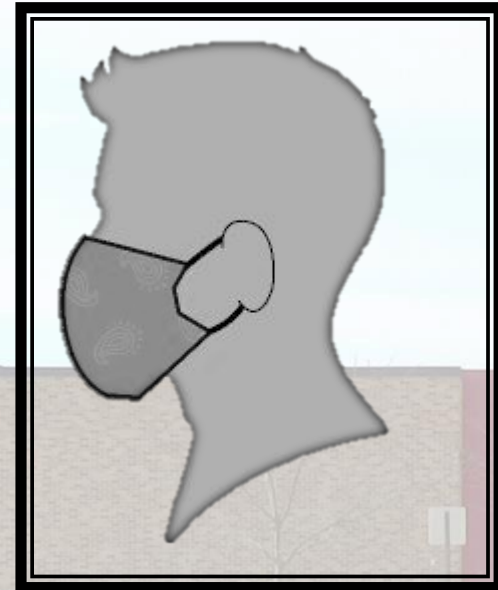
Inspire Learning. **Unlock Potential. Empower Achievement.**

# Face Coverings

Face masks will be required for all staff and students in K-12 grades and encouraged for PreK. A mask can be worn with a face shield, but a face shield can not be used in place of a mask.

The district will provide:

- One mask per student
- One mask and one face shield per staff member.



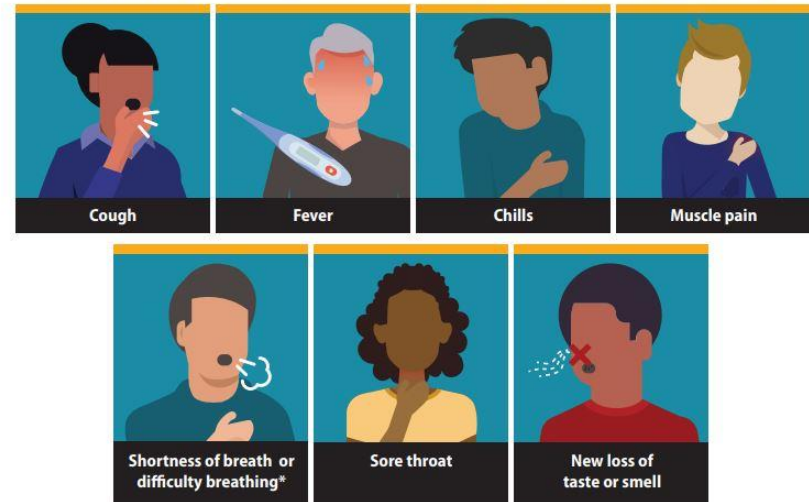
# Temperature Screenings

**STUDENTS** will be required to have their temperatures checked at home by their parents/guardians prior to reporting to school.

**STAFF** will be required to check their temperatures before reporting to work.

## Symptoms of Coronavirus (COVID-19)

Know the symptoms of COVID-19, which can include the following:



# Reporting of COVID Symptoms/Cases

Linn-Mar will follow the guidelines from the Linn County Public Health regarding student attendance.

*“Students that are identified to have a positive case of COVID-19 will be asked to self-isolate at home for 14 days. Anyone that was within 6 feet of this individual for 15 minutes or longer, will also be asked to self-isolate at home for 14 days.” Linn County Public Health*

**STUDENTS** who are exhibiting COVID symptoms or are diagnosed positive must immediately notify their building’s nurse or health assistant.

*Please note: More information will be provided later as we receive further direction from local health officials.*





# Classroom Structure/Layout

Classrooms will be restructured to abide by social distancing guidelines as much as possible.

Students will be seated facing forward to limit exposure and all couches, bean bag chairs, throw cushions, etc., will be removed from the classrooms.



# Meal Times

Students will eat meals in the cafeterias abiding by social distancing guidelines as much as possible. Additional areas (i.e. outdoor dining) may be available to address social distancing needs.

Meal times will be staggered and self-serve stations will be discontinued.



*Please note: More information will be provided later as we receive further guidance and direction.*



# Hallways/Passing Times

Class times will be staggered as much as possible to accommodate social distancing guidelines during passing times.

Hallways will be one-directional, or clearly marked as two-way.





# Recess

One grade level will have recess at a time to accommodate social distancing guidelines.

Students will be required to wash/disinfect their hands upon re-entering the buildings.





# Large Group Gatherings and Assemblies

When possible, class sizes will be reduced for physical education, band, choir, and orchestra.

Student assemblies will not be held.

The number of students will be limited in common areas.



# Cleaning of Facilities

Increased emphasis will be placed on cleaning and disinfecting schools on a daily and weekly basis.

Additional cleaning and sanitizing procedures will be in place throughout the school year. Examples include: Hand sanitizers, disinfecting wipes, physical barriers added in office areas, drinking fountains turned off and increased time for student handwashing.



*Please note: More information will be provided later as we receive further guidance from local health officials.*



# Signage

All district buildings will have signs clearly posted regarding handwashing, symptoms, face coverings, visitor policy, and lunch procedures.

**Stop the Spread of Germs**  
Help prevent the spread of respiratory diseases like COVID-19.

**6 ft**  
Stay at least 6 feet (about 2 arms' length) from other people.

When in public, wear a cloth face covering over your nose and mouth.

Do not touch your eyes, nose, or mouth.

Stay home when you are sick, except to get medical care.

**Symptoms of Coronavirus (COVID-19)**  
Know the symptoms of COVID-19, which can include the following:

- Chills
- Muscle pain
- Sore throat
- New loss of taste or smell

mild to severe illness, and appear 2-14 days after exposure to the virus that causes COVID-19.

Seek medical care immediately if someone has any of the following warning signs of COVID-19:

- Inability to wake or stay awake
- Shortness of breath
- Bluish lips or face

Please call your medical provider for any other symptoms you have.

**Please wear a cloth face covering.**

**6 ft**

Maintain a distance of 6 feet whenever possible.

[cdc.gov/coronavirus](https://www.cdc.gov/coronavirus)



# GENERAL



Inspire Learning. **Unlock Potential. Empower Achievement.**



# Attendance and Technology

**ATTENDANCE:** will be mandatory and recorded for all students. All students will receive online learning via Schoology.

**TECHNOLOGY:** Every student will be assigned a learning device to help limit the exposure to Covid-19. If a student is self-isolating or if school moves to exclusive online learning, students will be able to take these devices home to continue their learning online.

More information regarding device pick-up will be coming soon from your school building.

- PreK-K grade students will be assigned an iPad.
- 1st-12th grade students will be assigned a laptop.
- If access to the internet is a concern, [please click here](#).

*Please note: Devices will be returned to the school district at the end of the school year.*



# Transportation

All students will have assigned seating and will be required to wear face coverings on the bus.

Buses will be disinfected after each route and bus capacity will be reduced to approximately 60%. Windows and vents will be opened to allow for air circulation whenever possible.

Hand sanitizer stations will be available on all buses.



*Please note: Routes may need to be adjusted if there is a shortage of drivers.*



# Arrival/Drop-Off Procedures

Parents will not be allowed to exit the vehicles during pick-up/drop-off.

Additional building entrances will be available to limit lines and crowding.

There will be designated drop-off locations for parents of student walkers.



STAFF  
NORTH  
LOT





# Volunteers/Visitors

At this time, non-essential visitors will not be allowed in the school buildings.

This includes but not limited to: volunteers, classroom guests, visits by family members, lunch visitors, non-essential business visits such as classroom observations etc.





# Exclusive Online Learning

The determination of whether the district exclusively moves to the **ONLINE** Learning Plan will be made by the Iowa Department of Education.

*“The Department of Education in consolation with the Department of Public Health will approve the temporarily move to primary remote learning for the entire building or district because of public health conditions.” Governor's Proclamation July 17<sup>th</sup>, 2020.*



# FAQ and Contact Info

[Click here](#) to visit the FAQ on our website.

If your question is not answered on the FAQ, please contact our Communications/Media Office at [info@linnmar.k12.ia.us](mailto:info@linnmar.k12.ia.us)



# REGISTRATION



Inspire Learning. **Unlock Potential. Empower Achievement.**

# 2020-21 Registration for ALL students

Due to COVID-19, registration for the 2020-21 school year will be online only.

- **All returning and new families:** Complete [eRegistration](#) starting Aug. 5th. All families must register for the 2020-21 school year, even if their contact information is the same, as parental permissions are required on an annual basis.
- **Returning families:** Sign into your family PowerSchool account and use the eRegistration portal to update **all of your LM students**. Even if no changes are necessary for your family, you must go through the entire eRegistration process for EACH of your students who will be attending a Linn-Mar school.
- **Families new to the district:** Contact your [school building](#) directly to obtain registration paperwork and login access to PowerSchool.
- For additional registration questions, please contact your school building directly.

